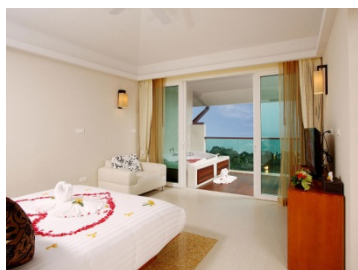


直航往返蘇梅
Direct Flight



- ✓ 來回曼谷航空經濟客位機票
Round trip economy class air ticket on PG
- ✓ 3晚酒店住宿連早餐
3 nights hotel accommodation with daily breakfast
- ✓ 來回蘇梅機場與酒店接送
Roundtrip transfers between airport & hotel

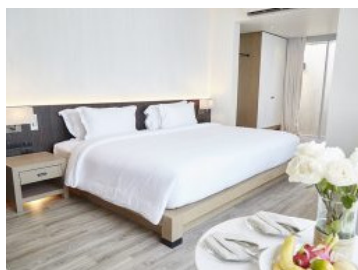


KC Resort & Over Water Villa

www.kchotelsresorts.com/en/kc-resort-over-water-villas

Chaweng Beach Deluxe Garden View

Oct :
成人佔半房
每位 **\$5530+**

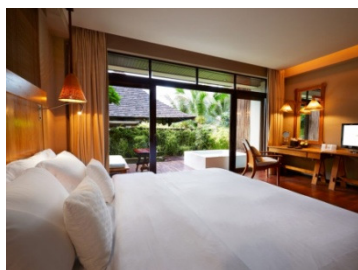


Celes Beachfront Resort

www.celesresorts.com

Bophut Beach Deluxe

Oct :
成人佔半房
每位 **\$5450+**



Silavadee Pool Spa Resort

www.silavadeeresort.com

Laem Nan Jacuzzi Deluxe

Oct :
成人佔半房
每位 **\$6430+**

直航往返蘇梅
Direct Flight



✓ 來回曼谷航空經濟客位機票
Round trip economy class air ticket on PG

✓ 3晚酒店住宿連早餐
3 nights hotel accommodation with daily breakfast

✓ 來回蘇梅機場與酒店接送
Roundtrip transfers between airport & hotel



Sala Samui Choengmon Beach Resort www.salasamui.com

Choeng Mon Deluxe Balcony

Oct :

成人
佔半房
每位 **\$7090+**

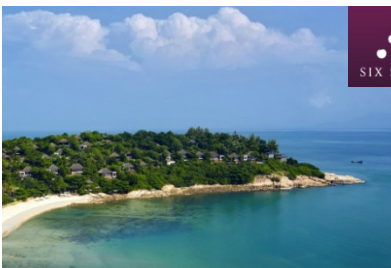


InterContinental Baan Taling Ngam Resort <http://samui.intercontinental.com/>

Taling Ngam Resort Classic

Oct :

成人
佔半房
每位 **\$8460+**



Six Senses Samui www.sixsenses.com/SixSensesSamui

Choeng Mon Hideaway Villa

Oct :

成人
佔半房
每位 **\$9000+**

直航往返蘇梅
Direct Flight



曼谷航空蘇梅島機票附加費表 PG Koh Samui Airfare Surcharge

出發日期：2019年10月08日 - 10月31日 Travel Period : 08Oct – 31Oct2019

1 人成行 GV1				
Departure		Per person	Booking class	Ticket validity
Economy Class	08Oct-31Oct	---	T	Max.7 days
		\$210		Max.14 days
Premium Economy Class	08Oct-31Oct	3660	E	Max.3 months
		4470	W	Max. 6 months
Business Class	01Oct-31Oct	3830	D	Max.3 months
		5450	C	Max. 6 months

Price Includes :

- Round trip economy class air ticket on PG
- 3 nights hotel accommodation with daily breakfast
- Roundtrip transfers between Koh Samui airport & hotel
- HK\$100,000 Travel Insurance [Zurich Insurance(Hong Kong) 24-hour emergency hotline+852-2886-3977]
- 0.15% TIC Levy

Child price :

- Twin Sharing / Extra bed adult price less : \$900
- Sharing room without bed, meals & roundtrip transfers : \$3020

Terms & Conditions :

- Package price is per person (in HK\$) and valid between **08Oct-31Oct19**; and hotel stay must be completed by 31Oct
- Booking class : T (except specified periods) Ticket validity : Maximum 14 days
- Twin room is based on 2 single beds or 1 double bed
- Airport tax, HK security charge & fuel surcharge (if any) are not included
- All the above benefits are only applicable for maximum 2 persons per room per stay
- Hotel star ratings are for reference only, please visit hotel's official website for more information
- Upon confirmation, any amendment is subject to our company's discretion
- All prices and conditions are subject to change without prior notice
- Check whether the Security Bureau has issued any [Outbound Travel Alert](#) for your destination before firming up your travel plan to ensure personal safety

費用包括：

- 來回曼谷航空經濟客位機票
- 三晚酒店住宿連早餐
- 來回蘇梅島機場與酒店接送
- HK\$100,000 旅遊保險 [蘇黎世保險(香港) 24小時緊急支援服務+852-2886-3977]
- 0.15% 旅遊業賠償基金

小童價錢：

- 佔床或加床收費按成人減收： \$900
- 不佔床(不包早餐及機場接送)收費為： \$3010

條款及細則：

- 以上套票價錢以每成人計算, 有效日期：2019年10月08日至10月31日; 酒店入住必須於10月31日或之前完成
- 訂位代號：T (指定日子除外) 機票有效期最長十四日
- 雙人房之房種為2張單人床或1張雙人床
- 費用並未包括兩地機場稅, 香港機場保安稅及燃油附加費 (如適用)
- 以上優惠每次每房最多適用於兩位客人
- 酒店星級只供參考, 詳情請到訪酒店官方網頁查詢
- 於機票及酒店確認後, 如需更改本公司擁有最終決定權
- 所有費用如有更改, 恕不另行通知
- 為確保自身安全, 旅客在落實行程前, 應留意保安局有沒有對目的地發出[外遊警告](#)